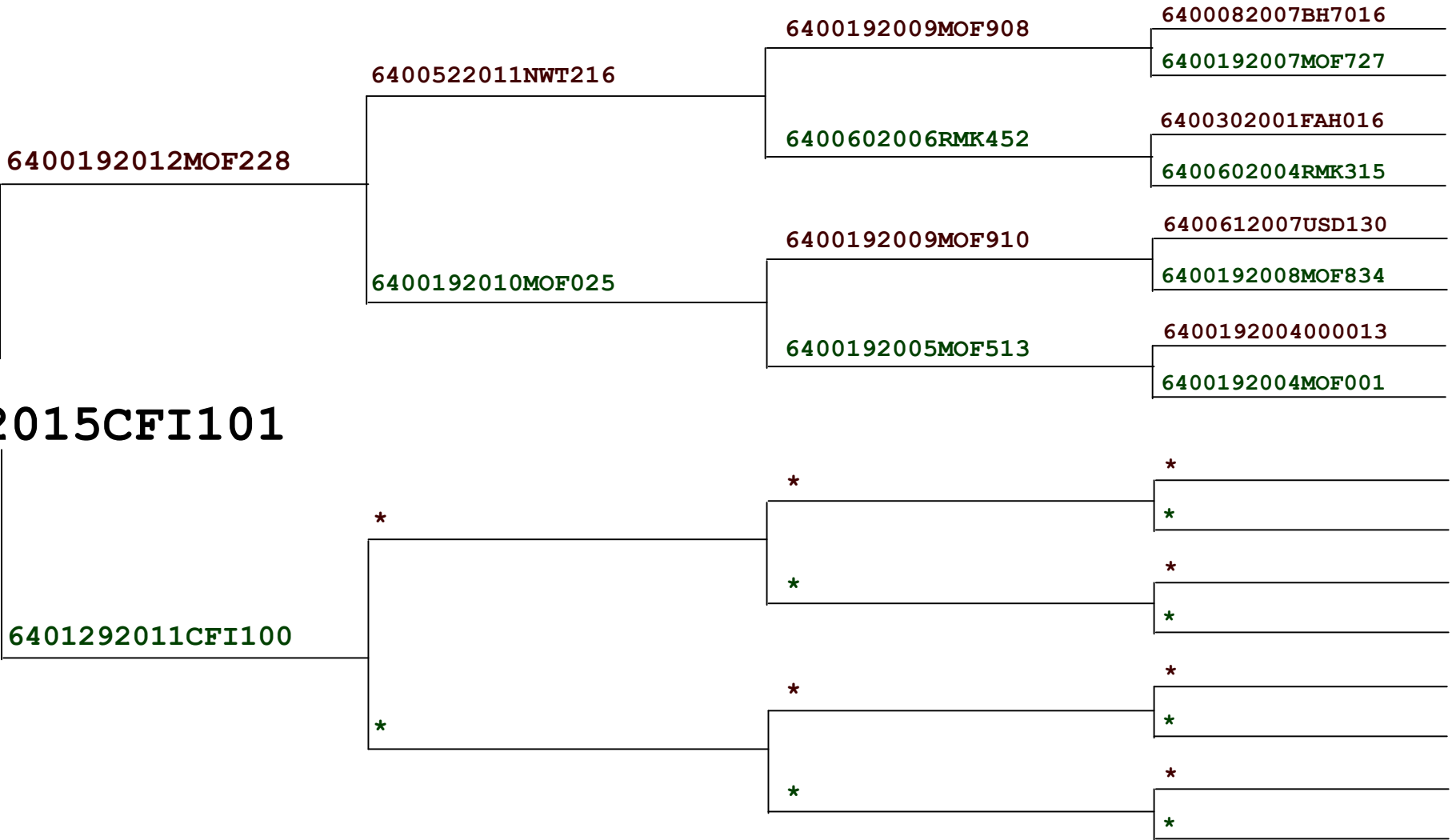


6401292015CFI101



CF-I101

Female Dob: *guess* Birth type:2 Rear type:2

PedigreeMaster

Bwt	Mwmt	Wwt	Pwmt	Pfat	Pemd	Wwec	Pwec	NLB%	NLW%	USA HAIR
0.26	-0.6	2.2	3.5	-0.4	*	-82.6	-96.8	23.6	22.6	107.7

Pedigree completeness 53%
Pedigree by breed 100%

Analysis ..
USA HAIR 15 October 2018